



georgina

PRODUCT  
GUIDEBOOK

# REDEFINE YOURSELF

We believe makeup is a powerful tool for self-expression. Explore a world of color and quality with our expansive collection of dazzling nail polishes, luxurious matte liquid lipsticks, and a complete range of pencils for eyes, lips, and brows.

By focusing on a limited range of products, we've been able to dedicate our attention to perfecting each one.

Our devotion to using high-quality raw materials ensures our products comply with international regulations, providing you with a safe and enjoyable makeup experience.

## EYES

Mascara	03
Longlasting Eyeliner Pen	05
Waterproof Eye Pencil	07
Kohl Eye Pencil	09
Longlasting Eyeshadow Pencil	11
Eyebrow Pencil	13

## LIPS

Waterproof Lipliner	15
Velvet Matte Lipstick	17
Matte Liquid Lipstick	19

## NAILS

Nail Polish	21
-------------	----





# EYES

## MASCARA 10ml.

Formulated with natural ingredients to nourish and strengthen your eyelashes. Its unique brush provides a precise application, separating and lengthening each lash. The special pigments create a dramatic, false-eyelash effect. This hypoallergenic mascara is gentle on your eyes and provides long-lasting wear, helping your eyelashes look thicker, denser, and healthier.

- Enhanced Volume
- Intense Black Color
- Precise Separation
- Lightweight Formula



# MASCARA



EYES

## LONGLASTING EYELINER PEN 2ml.

Waterproof, fade-proof, and smudge-proof liquid eyeliner pen featuring a flexible brush tip for precise application and long-lasting wear. This easy-to-use liner glides on smoothly, dries quickly, and stays in place all day without smudging or feathering.

- Intense Black Pigment
- Flexible brush tip
- Quick-drying
- Long-lasting wear



## EYELINER PEN





# EYES

## WATERPROOF EYE PENCIL 1,8 gr.

A highly pigmented, super-soft, creamy formula with a glide-y feel and velvety finish. Waterproof and long-wearing gel eyeliner that combines the silky texture of a liquid liner with the smudgy texture of kohl.

- Matte finish
- Creamy soft texture
- Long-lasting wear
- Waterproof



## WATERPROOF EYE PENCIL



201

202

203

EYES

# KOHL EYE PENCIL 1,4 gr.

This kôhl formula effortlessly glides intense pigment without skipping, even in the delicate inner eye area. Offering an exceptionally smooth application with a sharpenable precision tip for ultimate detail. Achieve any look with this long lasting formula, whether you are creating graphic lines, a smoky eye, or highlighting your waterline.

- Smooth application
- Hypoallergenic
- Ultra soft texture
- Long-lasting wear



## KOHL EYE PENCIL



EYES

# LONGLASTING EYESHADOW PENCIL 4,5 gr.

A super long-wearing eyeshadow pencil that provides intense color in satin and matte finishes, precise lining, and primes lids for all-day wear. These versatile pencils are ideal for oily lids and can be used to create both matte and satin finishes.

- Easy application
- Long wearing
- Blendable formula
- .Crease-proof



## LONGLASTING EYESHADOW PENCIL





EYES

# EYEBROW PENCIL 1,4 gr.

This pencil offers precise and natural brow definition. Perfect application is guaranteed with an ultra-slim, gliding tip for perfectly defined brows. The formula, developed using intense pigments, leaves great finish. The pencil also features a brow brush for an all-in-one brow tool.

- Matte finish
- Full coverage
- Easy application
- Natural look



# EYEBROW PENCIL



SPS

## WATERPROOF LIPLINER 1,4 gr.

A long-wear lip liner that applies effortlessly to shape and enhance lips with a richly pigmented and creamy formula. The comfortable matte texture is easy to blend and feels weightless on lips. The precise, wooden pencil guarantees sharp lines and a smooth, long-lasting application with no feathering.

- Creamy formula
- Richly pigmented
- Comfortable texture
- Matte finish



## WATERPROOF LIPLINER



LIPS

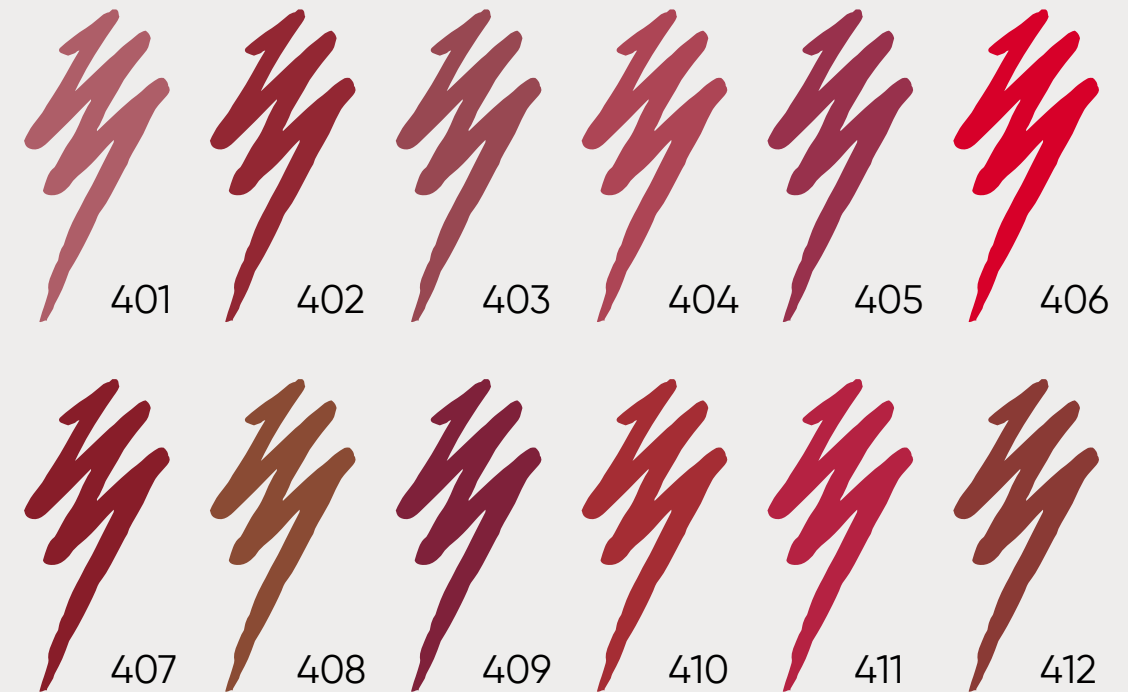
## VELVET MATTE LIPSTICK 4,5 gr.

Our matte lip color combines the rich pigment of a lipstick with the precision of a pencil. This innovative formula delivers intense color that sets to a luxurious matte finish. The creamy, non-drying texture feels comfortable on the lips and provides long-lasting wear.

- Weightless texture
- Creamy soft formula
- Long-lasting wear
- Velvety finish



## VELVET MATTE LIPSTICK





IPS

## MATTE LIQUID LIPSTICK 5ml.

Our weightless liquid lipstick provides rich, transfer-proof color with a soft, velvety matte finish. Its creamy formula delivers full coverage without drying out your lips and offers up to 10 hours of ultra-long hold. The slim precision tip ensures precise application, while the extensive shade range caters to all skin tones.

- Velvety matte finish
- Lightweight texture
- Quick drying
- Kiss-proof formula
- Full coverage



## MATTE LIQUID LIPSTICK



LIPS

## DEWY CREAMY LIP GLOSS 5ml.

The creamy, non-sticky formula glides on smoothly, delivering a comfortable, high-shine finish that beautifully hydrates the lips and enhances its natural fullness. Experience the perfect balance of soft colors and a gorgeous dewy glow that will leave your lips looking and feeling their absolute best.

- High shine finish
- Non-sticky formula
- Comfortable feel
- Hydrating



## DEWY CREAMY LIP GLOSS

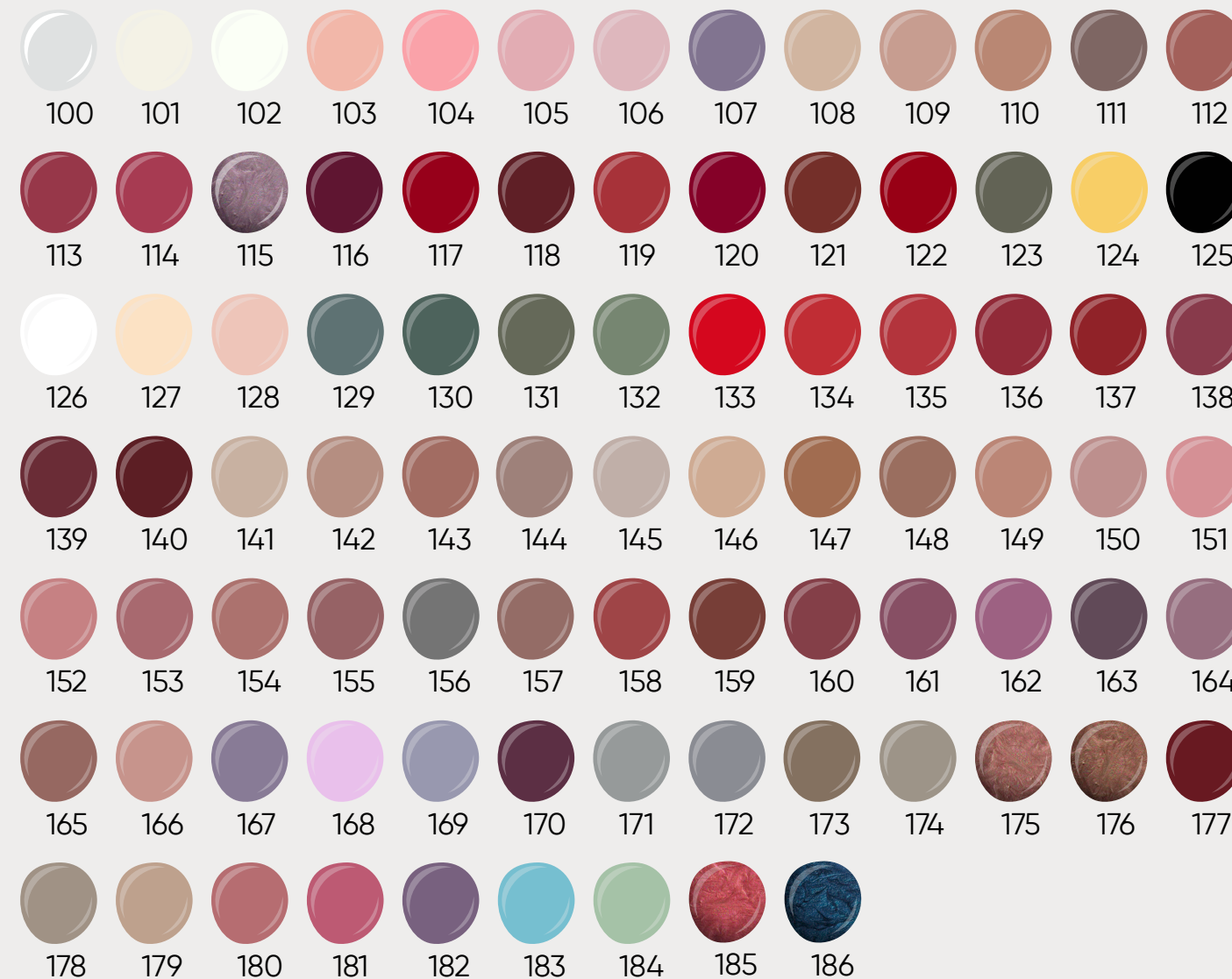


NAILS

# NAIL POLISH<sub>12ml.</sub>

The fast-drying formula with glossy, glamorous finish allows quick and even application without smudges or streaks. The precise brush makes the use nothing less than a pleasant experience. The polishes are chip-resistant and easy to remove. Discover the extensive palette of iconic classics to trendsetting colors of our nail polishes.

- High coverage
- Glossy finish
- Wide color range
- Quick drying







[info@shergroup.com.tr](mailto:info@shergroup.com.tr)



[www.shergroup.com.tr](http://www.shergroup.com.tr)



[georginacosmeticsofficial](https://www.instagram.com/georginacosmeticsofficial)